

Metropolitan Museum of Art
Gas Chromatography- Mass Spectrometry (GC-MS) Results from Material Analysis

This document includes (1) a mass spectrum and (2) the volatile organic compounds (VOCs) emitted from samples using GC-MS analysis. The data is not interpreted; however, several classes of chemicals are highlighted because they are potential risks for artwork in an enclosed environment. A basic key, provided below, indicates those classes. The amount of each chemical identified has not been determined; similarly, it is not known how much of each chemical is necessary to do damage to art. Finally, peaks may be present that are the result of the sample adsorbing chemicals from the air and reemitting them during testing rather than being inherent to the sample. Research is ongoing to determine specifically which chemicals and amounts are required to negatively affect artifacts.

Highlighted data:

Pink – chemicals currently known to be hazardous to art

Green – amines; can raise the pH, are suspected to react with acids and may form crystals in an enclosed environment

Yellow – chemicals of the following type, which *may* be hazardous to art:

Acids – lower the pH, corrosive to metals, degrade organic materials

Aldehydes – can convert to acids with heat or exposure to UV light

Esters – can hydrolyze into acids with heat and humidity

Sulfur-containing compounds – known to tarnish and corrode some metals

Halogenated compounds – can become reactive with exposure to heat and UV light

Nitrogen-containing, not amine – can react with other off-gassed chemicals

Alkynes – can become reactive when exposed to heat or UV light

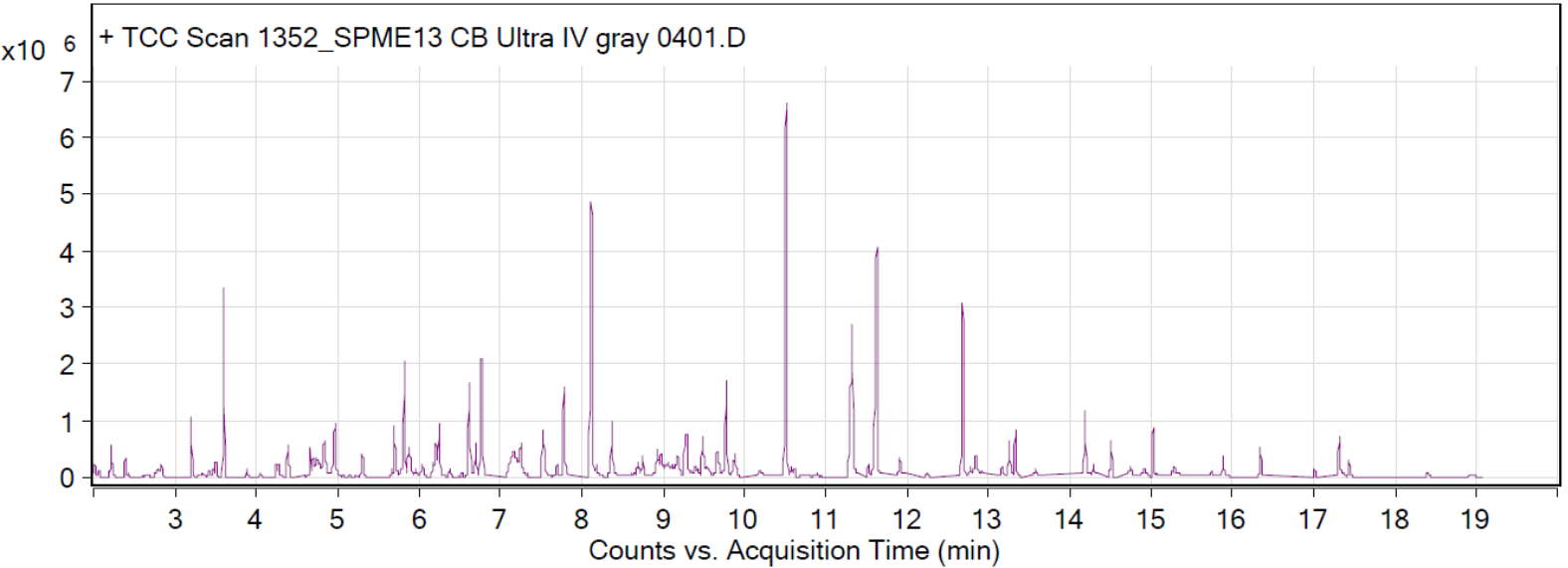
Sample: Creation Baumann Ultra IV Color 0401 gray cotton fabric

Oddy test score: Temporary

Date collected: 07/18/2016

Technique used: SPME with a PDMS/DVB fiber; Agilent 7890B GC and 5977B MS fitted with a GL Sciences OPTIC-4 multimode inlet and LEAP PAL RTC autosampler; Pre-heated at 60°C for 20 minutes; fiber exposure at 60°C for 20 minutes; sample injected into 220°C inlet and cotrapped for 2 min at -15°C; GC ramped from 40°C to 225 °C at 10°C/min. Data analyzed in masshunter Qualitative. Samples > 90% match with a NIST 17.0 library are reported.

VOCs not highlighted are because they were also observed in blanks: (1) 11.6 min: 2-methyl-, 3-hydroxyl-2,4,4-trimethylpentyl ester propanoic acid



RT	Mass	Name	DB Formula
1.79		Ethanol	C2H6O
1.8		2-Propanone	C3H6O
1.98		1-Propanol	C3H8O
2.01		Furan, 2,3-dihydro-	C4H6O
2.21		Furan, tetrahydro-	C4H8O
2.23		Acetic acid	C2H4O2
2.84		Ethanol, 2-ethoxy-	C4H10O2
3.2		Benzene, methyl-	C7H8
3.41		Formamide, N,N-dimethyl-	C3H7NO
3.5		Hexanal	C6H12O
3.59		Cyclotrisiloxane, hexamethyl-	C6H18O3Si3
3.88		2-Furancarboxaldehyde	C5H4O2
4.27		Ethylbenzene	C8H10
4.38		XYLENE	C8H10
4.83		Ethanol, 2-butoxy-	C6H14O2
4.97		Butanoic acid, 4-chloro-	C4H7ClO2
5.66		C3 - benzene	C9H12
5.7		Benzaldehyde	C7H6O
5.82		Cyclotetrasiloxane, octamethyl-	C8H24O4Si4
5.87		Phenol	C6H6O
6.04		Urea, tetramethyl-	C5H12N2O
6.16		Benzene, 1,2,3-trimethyl-	C9H12
6.19		Decane	C10H22
6.21		Ethanol, 2-(2-ethoxyethoxy)-	C6H14O3
6.24		Cyclohexane, isocyanato-	C7H11NO
6.37		dipropylene glycol monomethyl ether isomer, STRUCTURE UNKNOWN	C7H16O3
6.62		1-Hexanol, 2-ethyl-	C8H18O
6.7		dl-Limonene	C10H16
6.77		Benzenemethanol	C7H8O
7.78		Nonanal	C9H18O
8.1		2-Cyclohexen-1-one, 3,5,5-trimethyl-	C9H14O

8.13		2-methoxy[1]benzothieno[2,3-c]quinolin-6(5H)-one	C16H11NO2S
8.18		Pentanedioic acid, dimethyl ester	C7H12O4
8.37		Acetic acid, 2-ethylhexyl ester	C10H20O2
8.93		Cyclohexanol, 5-methyl-2-(1-methylethyl)-	C10H20O
9.29		Cyclotetrasiloxane, octamethyl-	C8H24O4Si4
9.69		Benzothiazole	C7H5NS
9.77		Cyclohexane, isothiocyanato-	C7H11NS
9.88		Hexanoic acid, 2-ethyl-, 2-methylpropyl ester	C12H24O2
10.57		Undecane	C11H24
11.62		Propanoic acid, 2-methyl-, 3-hydroxy-2,4,4-trimethylpentyl ester	C12H24O3