

Metropolitan Museum of Art
Gas Chromatography- Mass Spectrometry (GC-MS) Results from Material Analysis

This document includes (1) a mass spectrum and (2) the volatile organic compounds (VOCs) emitted from samples using GC-MS analysis. The data is not interpreted; however, several classes of chemicals are highlighted because they are potential risks for artwork in an enclosed environment. A basic key, provided below, indicates those classes. The amount of each chemical identified has not been determined; similarly, it is not known how much of each chemical is necessary to do damage to art. Finally, peaks may be present that are the result of the sample adsorbing chemicals from the air and reemitting them during testing rather than being inherent to the sample. Research is ongoing to determine specifically which chemicals and amounts are required to negatively affect artifacts.

Highlighted data:

Pink – chemicals currently known to be hazardous to art

Green – amines; can raise the pH, are suspected to react with acids and may form crystals in an enclosed environment

Yellow – chemicals of the following type, which *may* be hazardous to art:

Acids – lower the pH, corrosive to metals, degrade organic materials

Aldehydes – can convert to acids with heat or exposure to UV light

Esters – can hydrolyze into acids with heat and humidity

Sulfur-containing compounds – known to tarnish and corrode some metals

Halogenated compounds – can become reactive with exposure to heat and UV light

Nitrogen-containing, not amine – can react with other off-gassed chemicals

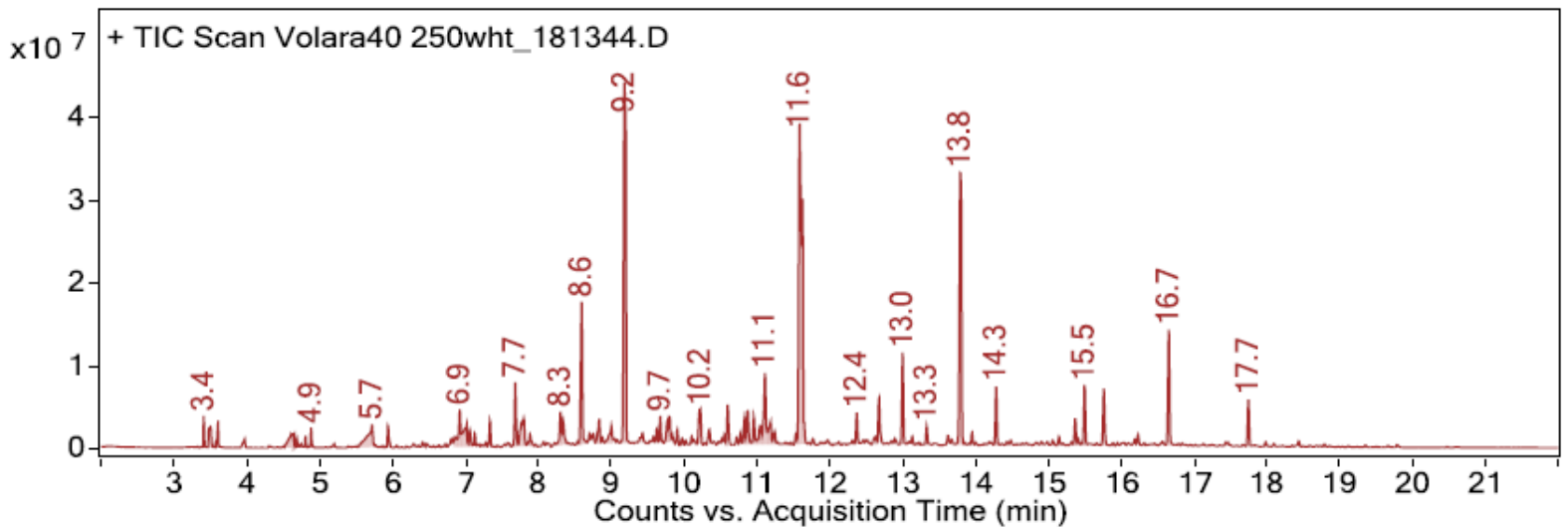
Alkynes – can become reactive when exposed to heat or UV light

Sample: Volara A foamed polyethylene 040A 0250WH; Seksui Voltek; density: 040; width: 0.25"; white

Date collected: 03/19/2018

Technique used: SPME with a PDMS/DVB fiber; Agilent 7890B GC and 5977B MS fitted with a GL Sciences OPTIC-4 multimode inlet and LEAP PAL RTC autosampler; Pre-heated at 60°C for 20 minutes; fiber exposure at 60°C for 20 minutes; sample injected into 220°C inlet and crotrapped for 2 min at -15°C; GC ramped from 40°C to 225 °C at 10°C/min. Data analyzed in masshunter Qualitative. Samples > 80% match with a NIST 17.0 library are reported.

VOCs not highlighted are because they were also observed in blanks: (1) 12.7 min: 2-methyl-, 3-hydroxyl-2,4,4-trimethylpentyl ester propanoic acid



RT	Mass	Name	DB Formula
3.5		Formic acid	CH2O2
3.61		Acetic acid	C2H4O2
3.97		Propanoic acid	C3H6O2
4.81		Hexanal	C6H12O
4.88		Cyclotrisiloxane, hexamethyl-	C6H18O3Si3
5.71		Pentanoic acid	C5H10O2
6.92		Cyclotetrasiloxane, octamethyl-	C8H24O4Si4
7.34		Octanal	C8H16O
7.68		1-Hexanol, 2-ethyl-	C8H18O
7.77		dl-Limonene	C10H16
7.81		Benzyl Alcohol	C7H8O
7.89		(S)-(+)-5-Methyl-1-heptanol	C8H18O
8.76		Tetradecane	C14H30
9.19		Cyclopentasiloxane, decamethyl-	C10H30O5Si5
11.09		Benzaldehyde, 4-methoxy-	C8H8O2
11.19		Nonanoic acid	C9H18O2
11.59		Cyclohexasiloxane, dodecamethyl-	C12H36O6Si6
11.65		Tridecane	C13H28
12.68		Propanoic acid, 2-methyl-, 3-hydroxy-2,4,4-trimethylpentyl ester	C12H24O3
13		Tetradecane	C14H30
13.13		Dodecanal	C12H24O
13.95		1-Dodecanol	C12H26O
14.28		pentadecane	C15H32
15.5		Hexadecane	C16H34
15.76		Cyclooctasiloxane, hexadecamethyl-	C16H48O8Si8
16.65		Heptadecane	C17H36
17.75		Octadecane	C18H38
18.44		1-Octadecanol	C18H38O