

**Metropolitan Museum of Art**  
**Gas Chromatography- Mass Spectrometry (GC-MS) Results from Material Analysis**

This document includes (1) a mass spectrum and (2) the volatile organic compounds (VOCs) emitted from samples using GC-MS analysis. The data is not interpreted; however, several classes of chemicals are highlighted because they are potential risks for artwork in an enclosed environment. A basic key, provided below, indicates those classes. The amount of each chemical identified has not been determined; similarly, it is not known how much of each chemical is necessary to do damage to art. Finally, peaks may be present that are the result of the sample adsorbing chemicals from the air and reemitting them during testing rather than being inherent to the sample. Research is ongoing to determine specifically which chemicals and amounts are required to negatively affect artifacts.

**Highlighted data:**

Pink – chemicals currently known to be hazardous to art

Green – amines; can raise the pH, are suspected to react with acids and may form crystals in an enclosed environment

Yellow – chemicals of the following type, which *may* be hazardous to art:

*Acids* – lower the pH, corrosive to metals, degrade organic materials

*Aldehydes* – can convert to acids with heat or exposure to UV light

*Esters* – can hydrolyze into acids with heat and humidity

*Sulfur-containing compounds* – known to tarnish and corrode some metals

*Halogenated compounds* – can become reactive with exposure to heat and UV light

*Nitrogen-containing, not amine* – can react with other off-gassed chemicals

*Alkynes* – can become reactive when exposed to heat or UV light

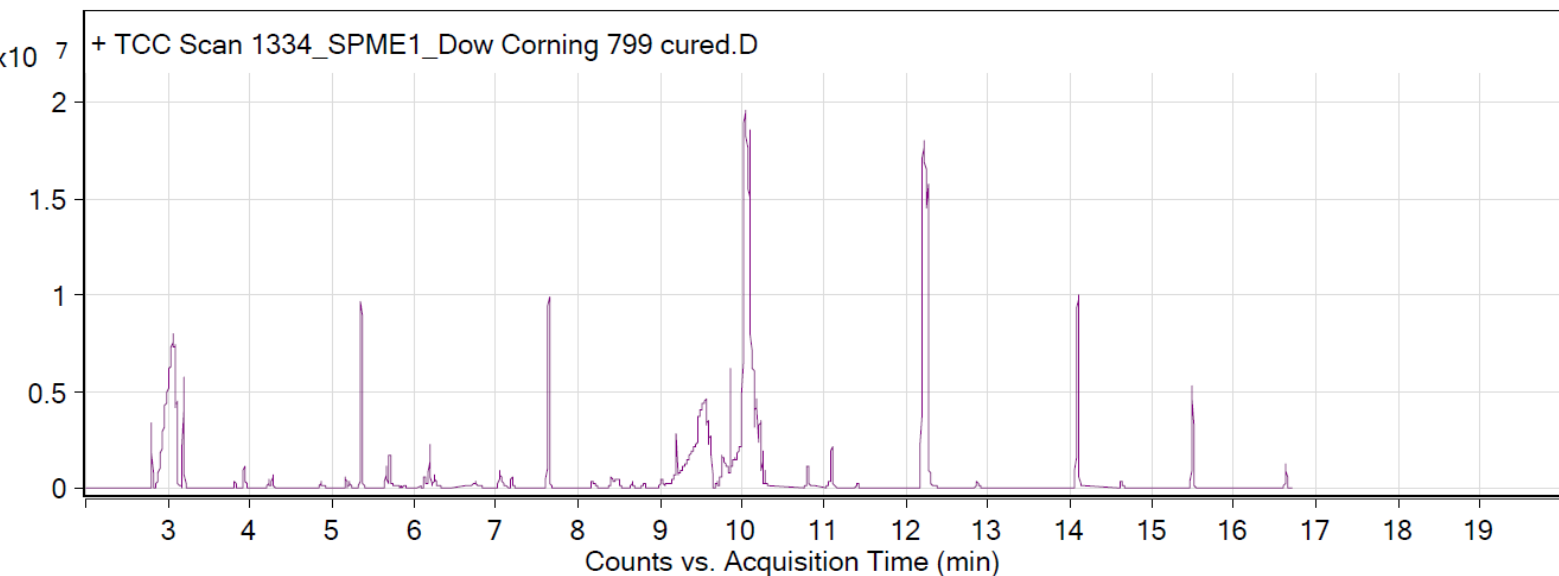
Sample: Dow Corning 799 translucent white Silicone Building Sealant 7-14 day cure

Oddy test score: Unsuitable

Date collected: 06/14/2016

Technique used: SPME with a PDMS/DVB fiber; Agilent 7890B GC and 5977B MS fitted with a GL Sciences OPTIC-4 multimode inlet and LEAP PAL RTC autosampler; Pre-heated at 60°C for 20 minutes; fiber exposure at 60°C for 20 minutes; sample injected into 220°C inlet and crotrapped for 2 min at -15°C; GC ramped from 40°C to 225 °C at 10°C/min. Data analyzed in masshunter Qualitative. Samples > 90% match with a NIST 17.0 library are reported.

VOCs not highlighted are because they were also observed in blanks: : (1) 11.1 min: 2-methyl-, 3-hydroxyl-2,4,4-trimethylpentyl ester propanoic acid



RT	Mass	Name	DB Formula
1.54		2-Propanone	C3H6O
1.77		2-Butanone	C4H8O
2.8		Benzene, methyl-	C7H8
3.06		2-Butanone, oxime	C4H9NO
3.11		2-Butanone, oxime	C4H9NO
3.19		Cyclotrisiloxane, hexamethyl-	C6H18O3Si3
3.92		o-Xylene	C8H10
4.22		unidentified C2-benzene	C8H10
4.28		Nonane	C9H20
5.17		unidentified C3-benzene	C9H12
5.22		Benzene, (1-methylethyl)-	C9H12
5.36		Cyclotetrasiloxane, octamethyl-	C8H24O4Si4
5.66		unidentified C3-benzene	C9H12
5.7		Decane	C10H22
6.19		dl-Limonene	C10H16
7.19		Undecane	C11H24
10.03		3-Formyl-N-methyl-9-[phenylethynyl]dibenzo[2,3-a : 5,6-a'] (1,4)-thiazine	C22H15NOS
10.06		Silane, tetramethyl-	C4H12Si
11.1		Propanoic acid, 2-methyl-, 3-hydroxy-2,4,4-trimethylpentyl ester	C12H24O3